



# Integrating Explainable Artificial Intelligence (XAI) in Forensic Psychiatry: Opportunities and Challenges

Rocco de Filippis<sup>1\*</sup>, Abdullah Al Foysal<sup>2</sup>

<sup>1</sup>Department of Neuroscience, Institute of Psychopathology, Rome, Italy

<sup>2</sup>Department of Computer Engineering (AI), University of Genova, Genova, Italy

Email: \*roccodefilippis@istitutodipsicopatologia.it, niloyhasanfoysal440@gmail.com

**How to cite this paper:** de Filippis, R. and Foysal, A.A. (2024) Integrating Explainable Artificial Intelligence (XAI) in Forensic Psychiatry: Opportunities and Challenges. *Open Access Library Journal*, 11: e12518. <https://doi.org/10.4236/oalib.1112518>

**Received:** October 23, 2024

**Accepted:** December 3, 2024

**Published:** December 6, 2024

Copyright © 2024 by author(s) and Open Access Library Inc.

This work is licensed under the Creative Commons Attribution International License (CC BY 4.0).

<http://creativecommons.org/licenses/by/4.0/>



Open Access

## Abstract

The rapidly evolving field of explainable Artificial Intelligence (XAI) offers new avenues in forensic psychiatry, addressing critical needs for transparency and reliability in decision-making processes. This paper explores the integration of XAI within forensic psychiatry, with a focus on enhancing decision support systems in complex assessments of human behavior and cognition. Key research objectives include evaluating the potential of XAI techniques to clarify decision pathways and improve interpretability in psychiatric evaluations, particularly within judicial settings where precision and accountability are paramount. The study employs a comprehensive methodology that synthesizes digital forensics and AI techniques to develop a framework that emphasizes clarity and insight into forensic psychiatric evaluations. By leveraging feature selection algorithms, decision trees, and Bayesian networks, the study enhances the interpretability and robustness of forensic assessments, addressing challenges of data complexity and variable transparency. Additionally, the paper presents a case study on drug testing in forensic psychiatry, showcasing how XAI can discern critical patterns within vast datasets, contributing to a nuanced understanding of psychiatric profiles. Results indicate that XAI methodologies significantly improve interpretability in forensic psychiatry, revealing previously obscured data relationships and enabling more precise, evidence-based conclusions. The paper concludes by discussing the opportunities and limitations of XAI, such as balancing transparency with predictive power, and the ethical considerations required for its responsible deployment in forensic settings. This study underscores the role of XAI in transforming forensic psychiatric practices, laying a foundation for future advancements aimed at refining assessment reliability and fostering fairer judicial outcomes.

## Subject Areas

Forensic Psychiatry, Explainable Artificial Intelligence (XAI), Digital Forensics, Machine Learning in Healthcare, Mental Health and Judicial Systems, Medical and Clinical AI Applications

## Keywords

Forensic Psychiatry, Explainable Artificial Intelligence (XAI), Machine Learning, Decision Making, Public Engagement

---

## 1. Introduction

Forensic psychiatry, positioned at the critical juncture of law and mental health, provides essential insights into the complex interactions between human behavior and the judicial system [1]. This field faces the significant task of decoding human emotions, motivations, and cognitive processes within legal contexts, where assessments often carry profound consequences. Forensic psychiatry's core mission—to achieve justice with compassion—requires meticulous evidence collection and decision-making amid these complexities [2]. Central to these evaluations is a commitment to transparency and reliability, ensuring each judgment is firmly rooted in accuracy and fairness. In settings where lives are affected by legal decisions, the integrity of forensic psychiatric assessments is paramount. Each piece of evidence and each inference drawn must withstand rigorous scrutiny to uphold justice, as the judicial system fundamentally relies on the trustworthiness of forensic conclusions. As forensic psychiatry evolves to meet modern challenges, explainable Artificial Intelligence (XAI) introduces a transformative shift in decision-making processes, enhancing transparency and interpretability [3]. Unlike traditional AI, where complex algorithms often lack clarity, XAI sheds light on the decision-making pathways within AI systems, allowing forensic psychiatrists to understand and validate the logic behind AI-driven insights [4]. By clarifying AI processes, XAI supports forensic psychiatry's standards for transparency and reliability, providing practitioners with clear, interpretable information that enhances the precision of evidence-based decisions. This introductory chapter sets the stage for exploring the potential of XAI in forensic psychiatry, addressing the persistent challenges in evidence evaluation, and underscoring the necessity for transparent, reliable decision-making. Through this discourse, we aim to illustrate how XAI could revolutionize forensic psychiatric evaluations, paving the way for an era marked by enhanced clarity, accountability, and fidelity in understanding human behavior within legal contexts.

## 2. Digital Forensics and AI

In the realm of digital forensics, the convergence of artificial intelligence (AI) techniques with traditional investigative methodologies heralds a new era of

innovation and opportunity. As forensic investigators grapple with the formidable task of unravelling complex digital artifacts and electronic evidence, the parallels between digital forensics and forensic psychiatry become increasingly apparent. Both disciplines share a common mandate: to decipher human behavior, motivations, and intentions, albeit through different lenses and methodologies. At their core, digital forensics and forensic psychiatry confront a myriad of challenges in evidence collection and decision-making [5]. From the exponential growth in data volume and complexity to the rapid advancements in technology and methodologies, both disciplines are confronted with a daunting array of obstacles that demand innovative solutions and interdisciplinary collaboration. Yet, amidst these challenges lie untold opportunities for advancement, innovation, and discovery, waiting to be harnessed by those daring enough to tread the path less travelled.

Enter artificial intelligence (AI), a transformative force that has revolutionized countless industries and domains. Within the realm of digital forensics, AI holds the promise of automating labor-intensive tasks, accelerating analysis, and uncovering hidden insights buried within mountains of data. From image and audio recognition to natural language processing and pattern recognition, AI algorithms offer unparalleled capabilities for discerning patterns, identifying anomalies, and extracting actionable intelligence from complex datasets [6]. However, the adoption of AI in digital forensics is not without its challenges. Chief among these is the imperative of explainability, the ability to elucidate the rationale behind AI-driven decisions in a clear, comprehensible manner. In a field where the stakes are high and the consequences profound, the need for transparency and accountability in decision-making processes cannot be overstated. Without a clear understanding of how AI algorithms arrive at their conclusions, forensic investigators and legal professionals may hesitate to trust their insights, undermining the integrity of the entire investigative process. In light of these challenges, the importance of explainability in AI-driven decision-making processes cannot be overstated. By incorporating explainable AI techniques, such as decision trees, forensic investigators can gain valuable insights into the underlying rationale behind AI-driven decisions, enhancing their trust, confidence, and efficacy in the investigative process. One such example is the decision tree algorithm, which serves as a powerful tool in digital forensics by recursively partitioning the feature space based on selected attributes to minimize impurity or maximize information gain [7]. The equations for calculating the Gini impurity of a node and the information gained for a split on a particular attribute provide forensic investigators with a clear understanding of the decision-making process behind AI-driven analyses, thereby bolstering transparency and reliability [8]. The equation for building a decision tree involves recursively partitioning the feature space based on selected attributes to minimize impurity or maximize information gain. One commonly used impurity measure is the Gini impurity, which is calculated as follows:

$$\text{Gini}(\text{node}) = 1 - \sum_{i=1}^c p_i^2$$

where node represents a node in the decision tree,  $c$  is the number of classes, and  $p_i^2$  is the proportion of instances of class  $i$  in the node.

The information gain IG for a split on a particular attribute  $A$  is calculated as the difference between the impurity of the parent node and the weighted sum of impurities of the child nodes:

$$IG(A) = \text{Gini}(\text{parent}) - \sum_{i=1}^m \frac{N_i}{N} \text{Gini}(\text{child}_i)$$

where  $m$  is the number of child nodes,  $N_i$  is the number of instances in the  $i$ 'th child node, and  $N$  is the total number of instances in the parent node.

The decision tree algorithm then selects the attribute with the highest information gain to split the data, creating child nodes and recursively repeating the process until certain stopping criteria are met, such as reaching a maximum tree depth or a minimum number of instances per node. This equation represents the core logic behind the decision tree algorithm and demonstrates how it partitions the feature space to make predictions [9]. By examining the structure of the decision tree and the criteria for splitting nodes, forensic investigators can gain insights into the decision-making process and understand the factors driving AI-driven decisions in digital forensics.

### 3. Explainable AI in Forensic Psychiatry

Forensic psychiatry stands at the nexus of mental health and the legal system, tasked with unravelling the complexities of human behavior within the context of judicial proceedings [10]. In recent years, the advent of explainable Artificial Intelligence (XAI) has opened new avenues for enhancing the transparency and reliability of forensic psychiatric evaluations [11]. This section delves into the opportunities and challenges of integrating XAI in forensic psychiatry, shedding light on relevant techniques and their potential applications in the field. At the heart of forensic psychiatry evaluations lies the imperative of transparency and reliability. As forensic psychiatrists' endeavor to assess mental states, determine culpability, and guide legal proceedings, the need for clear, comprehensible decision-making processes becomes paramount [12]. In this regard, XAI holds immense promise, offering a suite of techniques designed to elucidate the inner workings of complex algorithms and provide interpretable insights into decision-making processes. One of the key opportunities afforded by XAI in forensic psychiatry lies in its capacity to enhance the interpretability of predictive models [13]. By employing techniques such as feature selection, forensic psychiatrists can identify the most relevant variables influencing a given outcome, enabling them to make informed decisions based on clinically meaningful factors. Moreover, XAI techniques offer robust solutions for handling missing data, a common challenge in forensic psychiatric evaluations [14]. Through innovative imputation methods and data-driven approaches, missing data can be effectively addressed, ensuring the integrity and reliability of the analysis. Furthermore, XAI holds promise for facilitating multi-criteria decision-making in forensic psychiatry, where assess-

ments often involve weighing multiple factors and considerations. Techniques such as decision trees, Bayesian networks, and rule-based systems offer intuitive frameworks for integrating diverse sources of information and arriving at transparent, evidence-based decisions [15]. By harnessing the power of XAI, forensic psychiatrists can navigate the complex landscape of forensic evaluations with greater clarity and confidence, ultimately enhancing the quality and reliability of

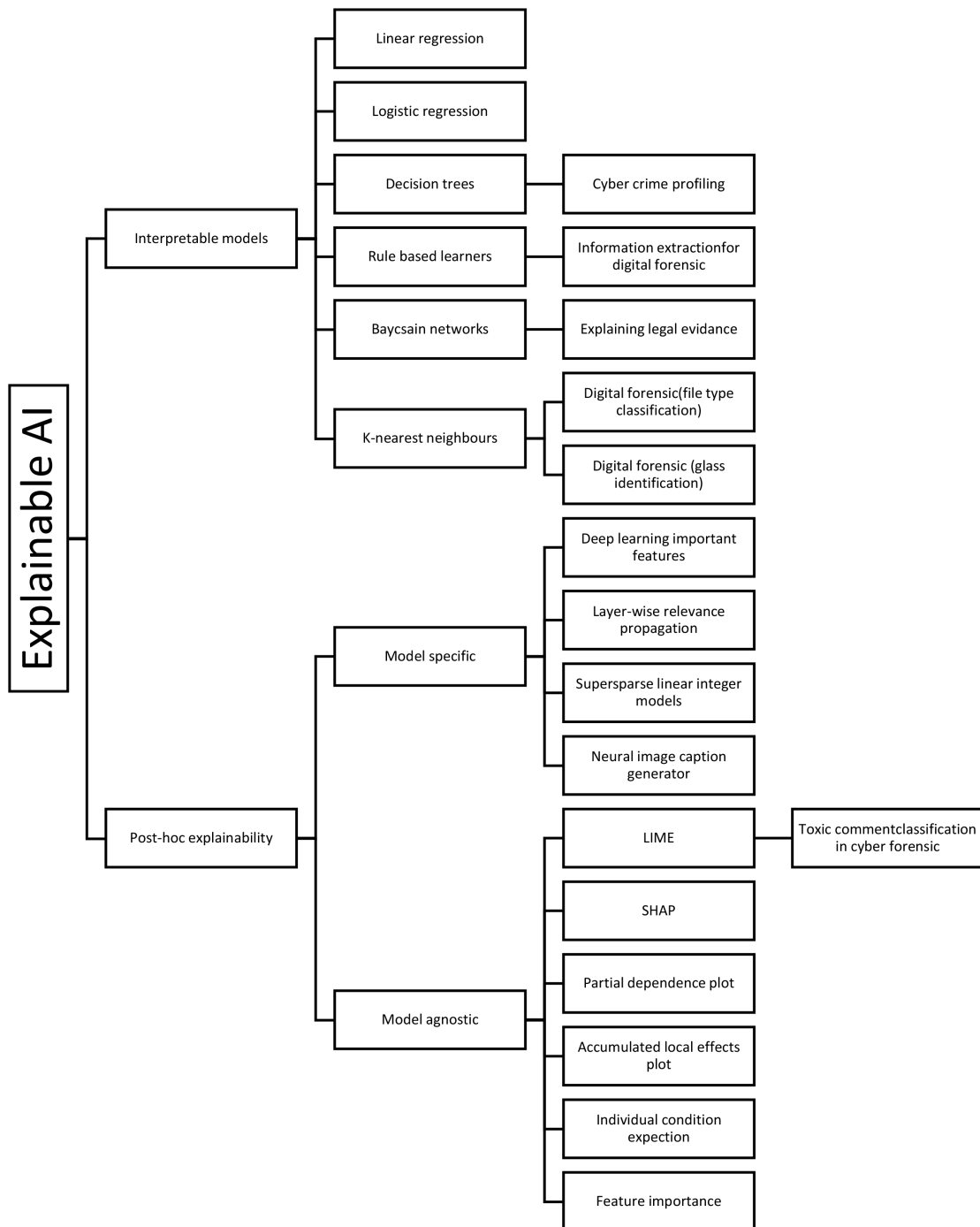


Figure 1. Classification of XAI techniques and their recent applications.

their assessments. However, the integration of XAI in forensic psychiatry is not without its challenges. Chief among these is the need to balance transparency with performance and accuracy. While XAI techniques excel at providing interpretable insights into decision-making processes, they may sacrifice some degree of predictive power in the process. Striking the right balance between transparency and performance is, therefore, essential, requiring careful consideration of the specific needs and objectives of forensic psychiatric evaluations. Moreover, the ethical and legal implications of XAI in forensic psychiatry warrant careful consideration. As AI-driven algorithms increasingly influence legal decision-making processes, questions of fairness, accountability, and bias mitigation become paramount. Forensic psychiatrists must navigate these complex ethical and legal landscapes with diligence and integrity, ensuring that XAI technologies are deployed responsibly and ethically in the pursuit of justice [16]. The integration of explainable AI in forensic psychiatry holds immense promise for enhancing the transparency, reliability, and efficacy of forensic evaluations.

In the realm of Artificial Intelligence (AI) in Forensic Psychiatry, notable advancements have emerged. Recent emphasis has been placed on adopting explainable AI (XAI) techniques to ensure algorithm robustness and transparent reasoning. Interpretable machine learning models like decision trees and rule-based systems have gained traction in addressing forensic psychiatry challenges, alongside the application of Bayesian Networks (BN) to elucidate legal cases [17]. Pioneering efforts by researchers have introduced XAI models tailored for forensic psychiatry. Despite strides in AI adoption, a dearth of work focusing on explicating automated decision-making processes persists. Greater attention to transparency and interpretability in AI-driven decision-making is crucial for advancing forensic psychiatric evaluations.

**Figure 1** illustrates the taxonomy of XAI techniques and their recent applications in AI for Forensic Psychiatry, underscoring the burgeoning significance of explainable methodologies in bolstering the reliability and efficacy of forensic assessments. However, careful consideration of the challenges and ethical implications associated with XAI is essential to ensure its responsible and ethical deployment in forensic psychiatric practice.

#### 4. Case Study: Drug Testing in Forensic Psychiatry

Drug testing is a crucial aspect of forensic psychiatry, used to determine the presence and extent of substance abuse, assess mental state, and guide legal proceedings [18]. It involves the analysis of biological samples, such as blood, urine, and hair, for the presence of drugs and their metabolites. The results of drug tests can reveal important information about a person's substance use history, which can aid in the diagnosis and treatment of substance-related disorders, as well as in legal proceedings related to drug offenses. Forensic psychiatrists utilize drug testing in combination with other assessment methods, such as interviews and psychological examinations, to provide a comprehensive evaluation of an individual's

mental state and behavior [19]. Delving into the intricate dynamics of drug testing within forensic psychiatry, this case study unveils the comprehensive methodologies of data collection, analytical testing procedures, and the profound implications of explainable Artificial Intelligence (XAI) in bolstering forensic evaluations [20].

#### 4.1. Data Collection Methods

Forensic psychiatrists employ a multifaceted approach to data collection, blending experimental and observational methods [21]. Biological samples, including urine, blood, hair, and nails, are routinely collected to detect the presence of drugs and their metabolites [22]. Concurrently, questionnaire-based assessments are administered to gather detailed insights into substance use history, frequency, and associated behaviors. By amalgamating these diverse data streams, forensic psychiatrists construct a holistic understanding of an individual's drug consumption patterns and mental status.

#### 4.2. Analytical Testing Procedures

The analytical arm of drug testing encompasses a suite of sophisticated techniques aimed at detecting and quantifying drugs and metabolites within biological samples. Chromatographic methodologies such as gas chromatography-mass spectrometry (GC-MS) and liquid chromatography-mass spectrometry (LC-MS) are routinely employed for their exceptional sensitivity and specificity [23]. Complemented by immunoassays, these techniques enable forensic psychiatrists to accurately identify substances present in an individual's system and gauge the extent of drug use.

#### 4.3. Decision-Making Process for Drug Screening

Navigating the decision-making landscape for drug screening demands meticulous scrutiny of collected data, encompassing laboratory results and clinical observations [24]. Forensic psychiatrists meticulously weigh various factors, including the type of drug detected, concentration levels, substance use history, and associated behavioral or psychological manifestations [25]. Armed with this comprehensive dataset, forensic psychiatrists render informed judgments regarding an individual's mental state, diagnosis of substance use disorders, and the potential ramifications for legal proceedings.

#### 4.4. Conduct Substance Abuse and Compliance Assessment

##### Case Study 1: Schizophrenia and Substance Abuse:

A 45-year-old man, diagnosed with schizophrenia, exhibits erratic behavior in public and is arrested. Laboratory tests reveal the presence of antipsychotic medications, cannabinoids, and amphetamines in his system [26]. The forensic psychiatrist corroborates the findings with medical records, confirming prescribed medications. However, the presence of illicit substances prompts further

investigation into potential non-compliance and substance-induced psychosis.

**Case Study 2: Suicide Attempt and Co-Occurring Disorders:**

Following a suicide attempt, a 30-year-old woman is admitted to the emergency room. Drug testing detects opioids and benzodiazepines, alongside clinical observations of depressed mood [27]. The forensic psychiatrist reviews past psychiatric history, family dynamics, and corroborative statements from caregivers to ascertain co-occurring substance abuse and psychiatric disorders, informing treatment planning and risk management strategies.

**Case Study 3: Motor Vehicle Accident and Substance Use:**

After a motor vehicle accident, a 20-year-old college student underwent toxicology screening, revealing elevated blood alcohol levels and traces of cocaine. The forensic psychiatrist conducts a comprehensive assessment, considering substance use history, psychiatric symptoms, and driving behavior [27]. The integration of eyewitness accounts and accident reconstruction data provides compelling evidence linking substance use to impaired judgment and legal culpability.

**Case Study 4: Bipolar Disorder and Medication Adherence:**

A 55-year-old man with bipolar disorder presents with manic symptoms. Drug testing confirms the presence of prescribed lithium and antidepressants. However, the absence of prescribed medications and the detection of stimulants raise concerns about non-compliance and illicit substance use [28]. The forensic psychiatrist conducts a thorough review of medical records, medication adherence patterns, and collateral information from family members to delineate the complex interplay between psychiatric symptoms and substance abuse.

**Case Study 5: Chronic Cocaine Use and Trauma:**

A 25-year-old woman is arrested for shoplifting, prompting forensic evaluation. Hair follicle testing reveals chronic cocaine use spanning several months. The forensic psychiatrist conducts a trauma-informed assessment, exploring past experiences of abuse and adversity [29]. Collaborative interviews with treatment providers and family members provide corroborating evidence of substance abuse as a maladaptive coping mechanism, shaping treatment recommendations and legal considerations.

**Case Study 6: Workplace Accident and Self-Medication:**

Following a workplace accident, a 35-year-old man tests positive for opioids and benzodiazepines. Despite denying substance abuse, further evaluation uncovers a history of chronic pain and self-medication [30]. The forensic psychiatrist conducts a psychosocial assessment, exploring pain management strategies, work-related stressors, and coping mechanisms. Collateral interviews with colleagues and supervisors provide additional insights into the individual's substance use patterns and functional impairment.

**Case Study 7: Psychiatric Hospital Admission and Medication Compliance:**

A 40-year-old woman is admitted to a psychiatric hospital following a suicide attempt. Blood tests reveal prescribed antidepressants and antipsychotics, consistent with her treatment regimen [31]. However, the absence of prescribed drugs

and the presence of opioids raise concerns about medication non-compliance and potential substance abuse exacerbating psychiatric symptoms. The forensic psychiatrist conducts a medication reconciliation, corroborating findings with pharmacy records and collateral information from treatment providers to ascertain adherence patterns and substance use history.

**Case Study 8: Alcohol Dependence and Aggression:**

A 50-year-old man with alcohol dependence is arrested for assault. Breathalyzer testing confirms recent alcohol consumption, while urine analysis detects benzodiazepines and opioids [32]. The forensic psychiatrist conducts a comprehensive risk assessment, exploring the interplay between substance use disorders and aggression. Collateral interviews with family members and law enforcement officers provide corroborative evidence of alcohol-related impulsivity and violence, informing legal proceedings and treatment recommendations.

**Case Study 9: Child Custody Dispute and Substance Abuse Allegations:**

In a custody dispute, a 30-year-old individual alleges substance abuse by their ex-partner. Hair follicle testing reveals traces of marijuana and methamphetamine [33]. The forensic psychiatrist conducts collateral interviews with caregivers, child welfare professionals, and substance abuse treatment providers to evaluate the impact of substance abuse on parental fitness and child well-being. Court-admissible documentation of substance abuse treatment attendance and progress further supports the forensic psychiatrist's assessment.

**Case Study 10: Driving Under the Influence and Medication Interaction:**

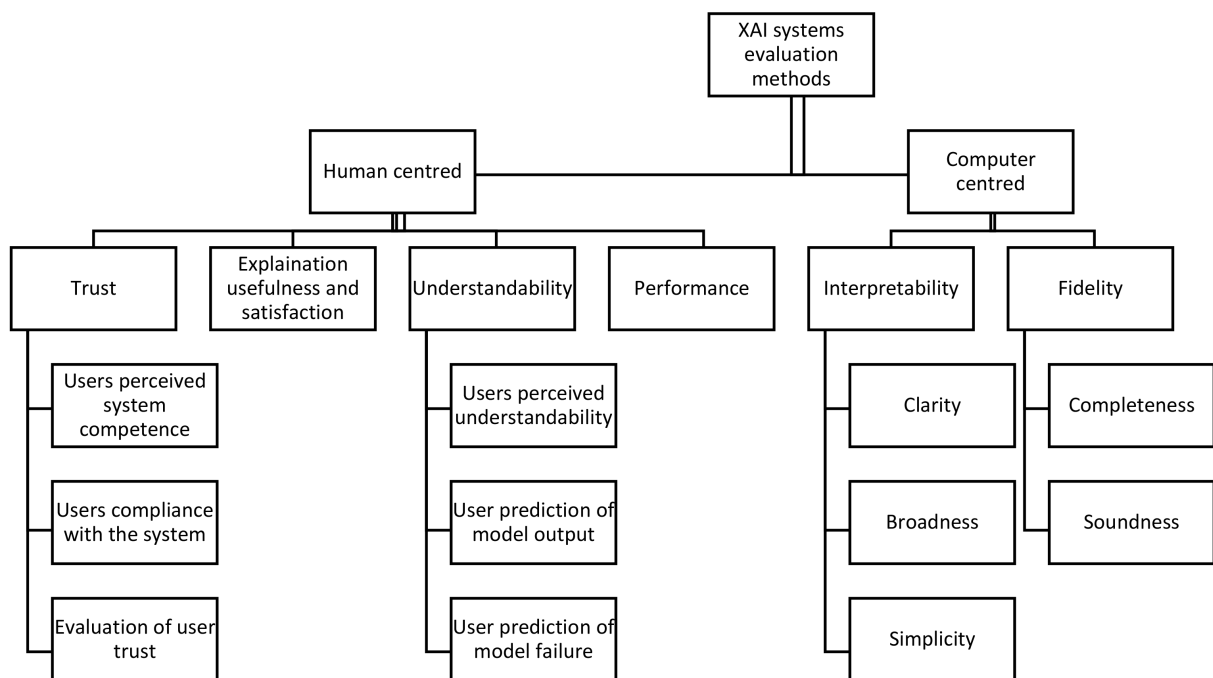
A 60-year-old man is arrested for driving under the influence. Blood tests confirm elevated alcohol levels and the presence of prescription medications [34]. The forensic psychiatrist conducts a comprehensive medication review, considering potential interactions between alcohol and prescribed drugs. Pharmacokinetic modelling and consultation with clinical pharmacologists provide evidence of synergistic effects, informing legal considerations and substance abuse treatment planning.

In each of these case studies, forensic psychiatrists employ a multi-faceted approach, integrating clinical expertise, collateral information, and corroborative evidence to elucidate the complex interplay between psychiatric symptoms, substance abuse, and legal implications. Through meticulous analysis and interpretation, forensic psychiatrists play a pivotal role in informing legal decisions, shaping treatment interventions, and promoting the well-being of individuals involved in forensic psychiatric evaluations.

## 5. Potential Role of XAI in Supporting Forensic Evaluations

In the ever-evolving landscape of forensic psychiatry, explainable Artificial Intelligence (XAI) emerges as a transformative tool, offering unprecedented support in decision-making processes for drug screening [35]. By harnessing the power of XAI, forensic psychiatrists can enhance the precision, interpretability, and reliability of forensic evaluations, thereby facilitating more informed, evidence-based

decisions and just legal outcomes. The intricate nature of forensic psychiatry research has prompted a proliferation of terminologies and categorizations for evaluating explainable Artificial Intelligence (XAI) methods [36]. Given the multidisciplinary character of this field, crafting a universal taxonomy to classify these methods proves challenging, as each sub-discipline within forensic psychiatry offers unique insights and perspectives [37]. In this study, we embrace this multidisciplinary essence and introduce a novel taxonomy (in **Figure 2**) aimed at serving as a guiding framework for evaluating XAI solutions in the context of forensic psychiatry. Our approach involves categorizing XAI evaluation methods into two primary families: Human-centered and computer-centered methods [38]. The former encompasses techniques that entail conducting user experiments involving human subjects, while the latter entails methods that leverage formal definitions of interpretability to assess the quality of explanations. Each family is further delineated into distinct categories, with the potential for additional sub-categories within each category. By adopting this taxonomy, we aim to provide a structured roadmap for evaluating XAI methods tailored to the complexities and nuances of forensic psychiatry research, facilitating a comprehensive understanding and assessment of XAI solutions in this domain.



**Figure 2.** Proposed taxonomy for XAI systems' evaluation methods.

**Feature Selection Algorithms:** XAI empowers forensic psychiatrists to navigate the intricate landscape of drug testing data by employing feature selection algorithms [39]. These algorithms sift through vast datasets to identify salient variables that influence diagnostic outcomes. By discerning meaningful patterns and relationships within the data, feature selection algorithms enhance the precision

and interpretability of forensic assessments, enabling forensic psychiatrists to make informed decisions with confidence.

### 5.1. Missing Data Handling Techniques

Inherent in forensic evaluations is the challenge of missing data, which can compromise the robustness and reliability of analyses. XAI techniques offer innovative solutions for mitigating gaps in the dataset, ensuring that forensic evaluations are comprehensive and accurate [40]. Through advanced imputation methods and data-driven approaches, XAI enables forensic psychiatrists to address missing data effectively, bolstering the integrity of forensic assessments and enhancing their utility in legal proceedings.

### 5.2. Navigating Complex Data Landscapes

The integration of XAI in forensic evaluations empowers forensic psychiatrists to navigate complex data landscapes with clarity and confidence [41]. By leveraging XAI techniques, forensic psychiatrists can unravel intricate relationships and dependencies within drug testing data, illuminating hidden insights and facilitating a deeper understanding of an individual's mental state and substance use patterns. This enhanced clarity enables forensic psychiatrists to make more informed, evidence-based decisions, thereby contributing to just legal outcomes and promoting the well-being of individuals involved in forensic psychiatric evaluations.

The potential role of XAI in supporting forensic evaluations is profound and far-reaching. By harnessing the power of feature selection algorithms and missing data handling techniques, XAI enables forensic psychiatrists to navigate the complexities of drug testing data with precision and reliability. Through the integration of XAI, forensic psychiatrists can make more informed, evidence-based decisions, thereby enhancing the integrity of forensic assessments and promoting just legal outcomes in the realm of forensic psychiatry.

## 6. Challenges and Opportunities

Integrating explainable Artificial Intelligence (XAI) into forensic psychiatry presents both significant challenges and promising opportunities. Foremost among the challenges is the ethical consideration surrounding the use of AI in decision-making processes, particularly in sensitive domains such as mental health and legal proceedings. Ensuring transparency and accountability in AI algorithms is paramount to mitigate risks of bias, discrimination, and privacy violations. Practical implementation issues, such as data privacy, security, and interoperability, also pose challenges to the widespread adoption of XAI in forensic psychiatry [42]. Additionally, the complexity of psychiatric evaluations and the multifaceted nature of human behavior present unique challenges for AI systems, requiring robust methodologies and interdisciplinary collaboration [43]. However, the integration of XAI in forensic psychiatry also presents promising opportunities for enhancing the quality, efficiency, and fairness of forensic evaluations. XAI

techniques offer unparalleled capabilities for elucidating complex decision-making processes, providing interpretable insights into the factors influencing diagnostic outcomes [44]. By leveraging XAI, forensic psychiatrists can navigate the intricate landscape of forensic data with greater clarity and confidence, enabling more informed and evidence-based decisions [45]. Moreover, XAI has the potential to streamline forensic evaluations, automating routine tasks and freeing up resources for more in-depth analysis and interpretation. Ultimately, the integration of XAI in forensic psychiatry holds the promise of improving the reliability and efficacy of forensic assessments, thereby promoting fairer legal outcomes and enhancing the well-being of individuals involved in the forensic psychiatric process.

### **Strategies for Addressing Challenges and Maximizing Benefits**

To address the challenges associated with integrating XAI in forensic psychiatry, proactive strategies must be implemented to ensure ethical and responsible use of AI technologies [46]. This includes promoting transparency and explainability in AI algorithms, fostering interdisciplinary collaboration between AI researchers, forensic psychiatrists, and ethicists, and establishing robust governance frameworks to oversee the deployment of AI systems. Moreover, efforts should be made to address practical implementation issues, such as data privacy and security concerns, through the adoption of standardized protocols and encryption techniques.

Maximizing the benefits of XAI in forensic psychiatry requires ongoing research and development to enhance the capabilities and reliability of AI algorithms. This includes the development of XAI techniques tailored to the unique challenges of forensic evaluations, such as feature selection algorithms that prioritize clinically relevant variables and missing data handling techniques that account for the complexities of psychiatric assessments [47]. Additionally, education and training programs should be implemented to equip forensic psychiatrists with the necessary skills and knowledge to effectively leverage XAI in their practice. By embracing these strategies, forensic psychiatry can harness the transformative potential of XAI to improve the quality, fairness, and efficiency of forensic evaluations, ultimately advancing the field and benefiting society.

## **7. Future Directions and Recommendations**

### **7.1. Advanced XAI Techniques**

Future research endeavors should prioritize the development of advanced XAI techniques specifically tailored to address the intricate challenges prevalent in forensic psychiatry [48]. This includes refining feature selection algorithms to effectively prioritize clinically pertinent variables, enhancing the interpretability of AI models in complex decision-making scenarios, and fortifying the robustness of AI systems to mitigate potential biases and discriminatory tendencies. Continual innovation in XAI methodologies is imperative to ensure their efficacy and relevance in the dynamic landscape of forensic evaluations.

## 7.2. Interdisciplinary Collaboration

Promoting interdisciplinary collaboration among AI researchers, forensic psychiatrists, ethicists, policymakers, and legal experts is paramount to fostering innovation and responsible deployment of XAI technologies [49]. Collaborative research initiatives and knowledge-sharing platforms can facilitate cross-disciplinary dialogue, leading to a deeper understanding of the ethical, legal, and societal implications surrounding the integration of AI in forensic psychiatry. By fostering synergistic partnerships, stakeholders can collectively address emerging challenges and devise holistic solutions to enhance the ethical and equitable application of XAI in forensic evaluations.

## 7.3. Ethical and Regulatory Frameworks

Policymakers and regulatory bodies must proactively establish transparent and comprehensive ethical and regulatory frameworks governing the deployment of XAI in forensic psychiatry [50]. These frameworks should encompass guidelines for ensuring transparency, fairness, and accountability in AI algorithms, as well as mechanisms for safeguarding individual privacy rights and mitigating potential risks of algorithmic bias. Furthermore, robust oversight mechanisms should be implemented to monitor ethical conduct and adherence to regulatory standards in the development and deployment of XAI technologies within forensic settings.

## 7.4. Training and Education

Investment in specialized training and education programs is essential to equip forensic psychiatrists, legal professionals, and other relevant stakeholders with the requisite knowledge and skills to effectively harness the potential of XAI in forensic evaluations [51]. Comprehensive training initiatives, including workshops, seminars, and interdisciplinary courses, can provide practitioners with practical insights into the application of XAI techniques in forensic decision-making processes. Moreover, ongoing professional development opportunities should be made available to ensure practitioners remain abreast of the latest advancements in XAI methodologies and ethical considerations.

## 7.5. Validation and Evaluation

Rigorous validation and evaluation of XAI systems are imperative to ascertain their reliability, validity, and real-world effectiveness in forensic psychiatry [52]. Longitudinal studies, comparative analyses, and rigorous benchmarking exercises should be conducted to empirically assess the performance and impact of XAI technologies on the quality and fairness of forensic evaluations. Moreover, standardized protocols for validation and evaluation should be established to ensure consistency and rigor across different forensic settings, thereby enhancing the credibility and trustworthiness of XAI-driven decision-making processes.

## 7.6. Public Engagement and Awareness

Engaging with the public and fostering awareness regarding the potential benefits and challenges of XAI in forensic psychiatry is essential to garner support and trust in AI-driven decision-making processes [53]. Public forums, stakeholder consultations, and educational campaigns can serve as platforms for promoting dialogue and transparency surrounding the ethical, legal, and societal implications of integrating XAI in forensic evaluations. By fostering a culture of openness and inclusivity, stakeholders can collaboratively address concerns and promote responsible adoption of XAI technologies in forensic psychiatry, ultimately fostering societal trust and confidence in AI-driven decision-making processes.

## 8. Conclusion

In summary, this paper has examined the transformative potential of integrating explainable Artificial Intelligence (XAI) in forensic psychiatry, offering insights into its challenges, opportunities, and future directions. Through a comprehensive analysis, it becomes evident that XAI holds immense promise for enhancing the quality, fairness, and efficiency of forensic evaluations, thereby shaping legal outcomes and promoting societal well-being [54]. The integration of XAI in forensic psychiatry has the potential to revolutionize decision-making processes, offering unprecedented clarity and interpretability in complex forensic assessments. By leveraging advanced XAI techniques, forensic psychiatrists can navigate the intricate landscape of forensic data with confidence, enabling more informed and evidence-based decisions [55]. Moreover, XAI has the capacity to streamline forensic evaluations, automating routine tasks and freeing up resources for in-depth analysis and interpretation [56]. However, it is crucial to underscore the importance of transparency, reliability, and ethical considerations in adopting XAI-driven approaches in forensic psychiatry. Transparency in AI algorithms ensures accountability and mitigates risks of bias and discrimination, while reliability safeguards the integrity and validity of forensic assessments [57]. Ethical considerations, including privacy protection and fairness, must be prioritized to uphold the rights and dignity of individuals involved in forensic evaluations [58]. In conclusion, the integration of XAI in forensic psychiatry represents a pivotal advancement with far-reaching implications for legal proceedings and societal well-being. By embracing the principles of transparency, reliability, and ethical responsibility, stakeholders can harness the full potential of XAI technologies to promote justice, equity, and the advancement of forensic psychiatry in the pursuit of truth and fairness.

## Ethical Approval

This study involved human data, which was obtained from and approved by the Istituto di Psicopatologia, Viale Cortina d'Ampezzo 112, Rome, Italia. The research was conducted in accordance with the ethical standards laid down in the

1964 Declaration of Helsinki and its later amendments.

## Funding

This research did not receive any specific grant from funding agencies in the public, commercial, or not-for-profit sectors.

## Conflicts of Interest

The authors declare that they have no competing financial interests or personal relationships that could have appeared to influence the work reported in this paper.

## Availability of Data and Materials

Data sharing is not applicable to this article as no new datasets were generated or analyzed during the current study.

## References

- [1] Heilbrun, K., Grisso, T. and Goldstein, A. (2008) Foundations of Forensic Mental Health Assessment. Oxford University Press. <https://doi.org/10.1093/med/9780195323092.001.0001>
- [2] Maynard-Moody, S. and Musheno, M. (2022) Cops, Teachers, Counselors: Stories from the Front Lines of Public Service. University of Michigan Press. <https://doi.org/10.3998/mpub.12247078>
- [3] Santosh, K.C. and Gaur, L. (2022) Artificial Intelligence and Machine Learning in Public Healthcare: Opportunities and Societal Impact. Springer Nature. <https://doi.org/10.1007/978-981-16-6768-8>
- [4] Li, X., Cao, C.C., Shi, Y., Bai, W., Gao, H., Qiu, L., *et al.* (2020) A Survey of Data-Driven and Knowledge-Aware Explainable AI. *IEEE Transactions on Knowledge and Data Engineering*, **34**, 29-49. <https://doi.org/10.1109/tkde.2020.2983930>
- [5] Holt, T.J., Bossler, A.M. and Seigfried-Spellar, K.C. (2022) Cybercrime and Digital Forensics: An Introduction. Routledge. <https://doi.org/10.4324/9780429343223>
- [6] Padhi, A., Agarwal, A., Saxena, S.K. and Katoch, C.D.S. (2023) Transforming Clinical Virology with AI, Machine Learning and Deep Learning: A Comprehensive Review and Outlook. *VirusDisease*, **34**, 345-355. <https://doi.org/10.1007/s13337-023-00841-y>
- [7] Podgorelec, V., Kokol, P., Stiglic, B. and Rozman, I. (2002) Decision Trees: An Overview and Their Use in Medicine. *Journal of Medical Systems*, **26**, 445-463. <https://doi.org/10.1023/a:1016409317640>
- [8] Garfinkel, S.L. (2010) Digital Forensics Research: The Next 10 Years. *Digital Investigation*, **7**, S64-S73. <https://doi.org/10.1016/j.diin.2010.05.009>
- [9] Oded, M. and Rokach, L. (2014) Data Mining with Decision Trees: Theory and Applications. World Scientific Publishing.
- [10] Joseph, R. (2023) The Importance of Psychology in Law and Investigation: Exploring Forensic Psychological Investigative Techniques and Criminal Psychology. In: Shekhar, B. and Pokhariyal, P., Eds., *Forensic Justice*, Routledge, 312-330. <https://doi.org/10.4324/9781032629346-21>
- [11] Sharifani, K. and Amini, M. (2023) Machine Learning and Deep Learning: A Review

- of Methods and Applications. *World Information Technology and Engineering Journal*, **10**, 3897-3904.
- [12] James, H. (2005) Criminal Responsibility, Abnormal Mental States, and the Functions of Expert Medico-Psychological Evidence. Ph.D. Dissertation, University of Nottingham.
- [13] Du, X., Hargreaves, C., Sheppard, J., Anda, F., Sayakkara, A., Le-Khac, N., et al. (2020). SoK. *Proceedings of the 15th International Conference on Availability, Reliability and Security*, New York, 25-28 August 2020, 1-10. <https://doi.org/10.1145/3407023.3407068>
- [14] Lefèvre, T. and Tournois, L. (2023) Artificial Intelligence and Diagnostics in Medicine and Forensic Science. *Diagnostics*, **13**, Article 3554. <https://doi.org/10.3390/diagnostics13233554>
- [15] Wang, Y. and Chung, S.H. (2021) Artificial Intelligence in Safety-Critical Systems: A Systematic Review. *Industrial Management & Data Systems*, **122**, 442-470. <https://doi.org/10.1108/imds-07-2021-0419>
- [16] Fiorino, C., Jeraj, R., Clark, C.H., Garibaldi, C., Georg, D., Muren, L., et al. (2020) Grand Challenges for Medical Physics in Radiation Oncology. *Radiotherapy and Oncology*, **153**, 7-14. <https://doi.org/10.1016/j.radonc.2020.10.001>
- [17] Porter, Z. (2021) Moral Responsibility for Unforeseen Harms Caused by Autonomous Systems. Ph.D. Dissertation, University of York.
- [18] Ratkalkar, M., Jackson, C. and Heilbrun, K. (2023) Race-Informed Forensic Mental Health Assessment: A Principles-Based Analysis. *International Journal of Forensic Mental Health*, **22**, 314-325. <https://doi.org/10.1080/14999013.2023.2178556>
- [19] Neal, T.M.S. and Grisso, T. (2014) Assessment Practices and Expert Judgment Methods in Forensic Psychology and Psychiatry: An International Snapshot. *Criminal Justice and Behavior*, **41**, 1406-1421. <https://doi.org/10.1177/0093854814548449>
- [20] Alam, S. and Altiparmak, Z. (2024) XAI-CF—Examining the Role of Explainable Artificial Intelligence in Cyber Forensics. arXiv: 2402.02452. <https://doi.org/10.48550/arXiv.2402.02452>
- [21] Anguera, M.T., Portell, M., Chacón-Moscoso, S. and Sanduvete-Chaves, S. (2018) Indirect Observation in Everyday Contexts: Concepts and Methodological Guidelines within a Mixed Methods Framework. *Frontiers in Psychology*, **9**, Article 13. <https://doi.org/10.3389/fpsyg.2018.00013>
- [22] Mali, N., Karpe, M. and Kadam, V. (2011) A Review on Biological Matrices and Analytical Methods Used for Determination of Drug of Abuse. *Journal of Applied Pharmaceutical Science*, **1**, 58-65.
- [23] Marchei, E., Ferri, M.A., Torrens, M., Farré, M., Pacifici, R., Pichini, S., et al. (2021) Ultra-High Performance Liquid Chromatography-High Resolution Mass Spectrometry and High-Sensitivity Gas Chromatography-Mass Spectrometry Screening of Classic Drugs and New Psychoactive Substances and Metabolites in Urine of Consumers. *International Journal of Molecular Sciences*, **22**, Article 4000. <https://doi.org/10.3390/ijms22084000>
- [24] Nuthakki, S., Uttiramerur, A.D., Nuthakki, Y. and Munjala, M.B. (2024) Navigating the Medical Landscape: A Review of Chatbots for Biomarker Extraction from Diverse Medical Reports. *International Journal for Multidisciplinary Research*, **6**, 1-16. <https://doi.org/10.36948/ijfmr.2024.v06i01.13154>
- [25] Heilbrun, K., DeMatteo, D., Marczyk, G. and Goldstein, A.M. (2008) Standards of Practice and Care in Forensic Mental Health Assessment: Legal, Professional, and

- Principles-Based Consideration. *Psychology, Public Policy, and Law*, **14**, 1-26. <https://doi.org/10.1037/1076-8971.14.1.1>
- [26] Estroff, T.W. and Gold, M.S. (2018) Psychiatric Misdiagnosis. In Gold, M.S., Carman, J.S. and Lydiard, R.B., Eds., *Advances in Psychopharmacology: Improving Treatment Response*, CRC Press, 33-66.
- [27] Owen, C., Tarantello, C., Jones, M. and Tennant, C. (1998) Violence and Aggression in Psychiatric Units. *Psychiatric Services*, **49**, 1452-1457. <https://doi.org/10.1176/ps.49.11.1452>
- [28] Timmerman, L., Stronks, D.L., Groeneweg, J.G. and Huygen, F.J. (2016) Prevalence and Determinants of Medication Non-Adherence in Chronic Pain Patients: A Systematic Review. *Acta Anaesthesiologica Scandinavica*, **60**, 416-431. <https://doi.org/10.1111/aas.12697>
- [29] Levenson, J. and Grady, M. (2016) Childhood Adversity, Substance Abuse, and Violence: Implications for Trauma-Informed Social Work Practice. *Journal of Social Work Practice in the Addictions*, **16**, 24-45. <https://doi.org/10.1080/1533256x.2016.1150853>
- [30] Zipursky, J., Gomes, T., Everett, K., Calzavara, A., Paterson, M., Austin, P.C., et al. (2023) 2023 ACMT Annual Scientific Meeting Abstracts—San Diego, CA. *Journal of Medical Toxicology*, **19**, 63-168. <https://doi.org/10.1007/s13181-023-00930-w>
- [31] Sadock, B.J. and Sadock, V.A. (2008) Kaplan & Sadock's Concise Textbook of Clinical Psychiatry. Lippincott Williams & Wilkins.
- [32] Flynn, P.M. and Brown, B.S. (2008) Co-occurring Disorders in Substance Abuse Treatment: Issues and Prospects. *Journal of Substance Abuse Treatment*, **34**, 36-47. <https://doi.org/10.1016/j.jsat.2006.11.013>
- [33] Laidler, K.A.J., Loh, C., Chong, S., Lum, L.G., Ma, N., Sze, B. and Cheung, J. (2000) The Hong Kong Drug Market. A Report for UNICRI on The UNDCP Global Study in Illicit Drug Markets. Centre for Criminology, University of Hong Kong, 6-8.
- [34] Hanzlick, R. and Goodin, J. (1997) Mind Your Manners: Part III: Individual Scenario Results and Discussion of the National Association of Medical Examiners Manner of Death Questionnaire, 1995. *The American Journal of Forensic Medicine and Pathology*, **18**, 228-245. <https://doi.org/10.1097/00000433-199709000-00003>
- [35] Grunwald, S. (2021) Grand Challenges in Pedometrics—AI Research. *Frontiers in Soil Science*, **1**, Article 714323. <https://doi.org/10.3389/fsoil.2021.714323>
- [36] Grimm, P.W., Grossman, M.R. and Cormack, G.V. (2021) Artificial Intelligence as Evidence. *Northwestern Journal of Technology and Intellectual Property*, **19**, 9-106.
- [37] Prins, H. (2015) Offenders, Deviants or Patients? An introduction to Clinical Criminology. Routledge.
- [38] Hsiao, J.I.H. (2021) Back to the Future: The Reviving of the Mental Steps Doctrine and the Immature Demise of Artificial Intelligence? *Journal of Science and Technology*, **31**, 179-225.
- [39] Costello, E.J., Egger, H. and Angold, A. (2005) 10-Year Research Update Review: The Epidemiology of Child and Adolescent Psychiatric Disorders: I. Methods and Public Health Burden. *Journal of the American Academy of Child & Adolescent Psychiatry*, **44**, 972-986. <https://doi.org/10.1097/01.chi.0000172552.41596.6f>
- [40] Saeed, W. and Omlin, C. (2023) Explainable AI (XAI): A Systematic Meta-Survey of Current Challenges and Future Opportunities. *Knowledge-Based Systems*, **263**, Article 110273. <https://doi.org/10.1016/j.knosys.2023.110273>
- [41] Delanerolle, G., Yang, X., Shetty, S., Raymont, V., Shetty, A., Phiri, P., et al. (2021)

- Artificial Intelligence: A Rapid Case for Advancement in the Personalization of Gynaecology/Obstetric and Mental Health Care. *Women's Health*, **17**.  
<https://doi.org/10.1177/17455065211018111>
- [42] Casino, F., Dasaklis, T.K., Spathoulas, G.P., Anagnostopoulos, M., Ghosal, A., Borocz, I., *et al.* (2022) Research Trends, Challenges, and Emerging Topics in Digital Forensics: A Review of Reviews. *IEEE Access*, **10**, 25464-25493.  
<https://doi.org/10.1109/access.2022.3154059>
- [43] Thieme, A., Belgrave, D. and Doherty, G. (2020) Machine Learning in Mental Health: A Systematic Review of the HCI Literature to Support the Development of Effective and Implementable ML Systems. *ACM Transactions on Computer-Human Interaction*, **27**, 1-53. <https://doi.org/10.1145/3398069>
- [44] Holzinger, A., Dehmer, M., Emmert-Streib, F., Cucchiara, R., Augenstein, I., Ser, J.D., *et al.* (2022) Information Fusion as an Integrative Cross-Cutting Enabler to Achieve Robust, Explainable, and Trustworthy Medical Artificial Intelligence. *Information Fusion*, **79**, 263-278. <https://doi.org/10.1016/j.inffus.2021.10.007>
- [45] Feigenbaum, E.A. (2003) Some Challenges and Grand Challenges for Computational Intelligence. *Journal of the ACM*, **50**, 32-40. <https://doi.org/10.1145/602382.602400>
- [46] Reinke, A., Tizabi, M.D., Eisenmann, M. and Maier-Hein, L. (2021) Common Pitfalls and Recommendations for Grand Challenges in Medical Artificial Intelligence. *European Urology Focus*, **7**, 710-712. <https://doi.org/10.1016/j.euf.2021.05.008>
- [47] Antoniadis, A.M., Du, Y., Guendouz, Y., Wei, L., Mazo, C., Becker, B.A., *et al.* (2021) Current Challenges and Future Opportunities for XAI in Machine Learning-Based Clinical Decision Support Systems: A Systematic Review. *Applied Sciences*, **11**, Article 5088. <https://doi.org/10.3390/app11115088>
- [48] Speith, T. (2022) A Review of Taxonomies of Explainable Artificial Intelligence (XAI) Methods. 2022 *ACM Conference on Fairness, Accountability, and Transparency*, Seoul, 21-24 June 2022, 2239-2250. <https://doi.org/10.1145/3531146.3534639>
- [49] Ozmen Garibay, O., Winslow, B., Andolina, S., Antona, M., Bodenschatz, A., Coursaris, C., *et al.* (2023) Six Human-Centered Artificial Intelligence Grand Challenges. *International Journal of Human-Computer Interaction*, **39**, 391-437.  
<https://doi.org/10.1080/10447318.2022.2153320>
- [50] Kemper, C. (2019) Kafkaesque AI? Legal Decision-Making in the Era of Machine Learning. *Intellectual Property and Technology Law Journal*, **24**, 251-294.  
<https://doi.org/10.31228/osf.io/4jzk2>
- [51] Prokopenko, M. (2014) Grand Challenges for Computational Intelligence. *Frontiers in Robotics and AI*, **1**, Article 2. <https://doi.org/10.3389/frobt.2014.00002>
- [52] von Gerich, H., Moen, H., Block, L.J., Chu, C.H., DeForest, H., Hobensack, M., *et al.* (2022) Artificial Intelligence—Based Technologies in Nursing: A Scoping Literature Review of the Evidence. *International Journal of Nursing Studies*, **127**, Article 104153.  
<https://doi.org/10.1016/j.ijnurstu.2021.104153>
- [53] Coppola, F., Faggioni, L., Gabelloni, M., De Vietro, F., Mendola, V., Cattabriga, A., *et al.* (2021) Human, All Too Human? An All-Around Appraisal of the “Artificial Intelligence Revolution” in Medical Imaging. *Frontiers in Psychology*, **12**, Article 710982. <https://doi.org/10.3389/fpsyg.2021.710982>
- [54] Shneiderman, B. (2020) Bridging the Gap between Ethics and Practice: Guidelines for Reliable, Safe, and Trustworthy Human-Centered AI Systems. *ACM Transactions on Interactive Intelligent Systems*, **10**, 1-31. <https://doi.org/10.1145/3419764>
- [55] Zidaru, T., Morrow, E.M. and Stockley, R. (2021) Ensuring Patient and Public

Involvement in the Transition to AI-Assisted Mental Health Care: A Systematic Scoping Review and Agenda for Design Justice. *Health Expectations*, **24**, 1072-1124. <https://doi.org/10.1111/hex.13299>

- [56] Javed, A.R., Ahmed, W., Pandya, S., Maddikunta, P.K.R., Alazab, M. and Gadekallu, T.R. (2023) A Survey of Explainable Artificial Intelligence for Smart Cities. *Electronics*, **12**, Article 1020. <https://doi.org/10.3390/electronics12041020>
- [57] Blacklaws, C. (2018) Algorithms: Transparency and Accountability. *Philosophical Transactions of the Royal Society A: Mathematical, Physical and Engineering Sciences*, **376**, Article 20170351. <https://doi.org/10.1098/rsta.2017.0351>
- [58] Weinstock, R., Leong, G. and Silva, J. (2003) Ethical Guidelines. In: Rosner, R., Ed., *Principles and Practice of Forensic Psychiatry*, CRC Press, 56-72.